



## Haslab BenchTop Geräte

 Seite 2	3D Schüttler 3KG & 5KG	3D Shaker 3KG & 5KG
 Seite 4	Flaschen Roller / Mischer	Bottleroller
 Seite 5	Heiz-Magnetrührer	Hotplatestirrers
 Seite 8	Mehrstellen-Heiz-Magnetrührer	Station Heated Stirrer
 Seite 9	Mikrotiterplatten Schüttler	Micro Plate Shaker
 Seite 11	Mikrotiterplatten Abkühler	Mikroplate Thawing
 Seite 12	Magnetrührer ohne Heizung	Station Magnetic Stirrer
 Seite 19	Mini Zentrifuge (8x 1,5 ml & PCR)	Smart Centrifuge (8x 1,5 ml & PCR)
 Seite 20	Mikroliter Zentrifuge (12x1,5ml)	Table Top Centrifuge (12x1,5ml)
 Seite 21	Plattform Schüttler (7,5KG & 15 KG)	Platform Shaker (7,5KG & 15 KG)
 Seite 23	Rollenmischer / Blutrollenmischer	Tube Roller
 Seite 25	Vortexer Mixer / Schüttler	Vortex Mixer
 Seite 28	Kreis-Rotator / Platten-Rotator	Plate & Disk Rotator

Bei Fragen kontaktieren Sie uns. Wir sind sehr gerne für Sie da !

Digital 3D Shaker with Microprocessor & Brushless Motor Art.Nr. BEN0010



SERVICE BY  
**haslab**  
alles ausser gewöhnlich

- Brushless DC motor for quiet and maintenance free long operation.
- Three dimensional rocking / tumbling motion for homogenous mixing
- Microprocessor controlled device with digital display
- Variable speed setting from 15 to 80 RPM in steps of 5 RPM
- Long timer range from 1-999 mins & infinite mode
- Programmable feature in which user can set and save upto 9 user defined programs (protocols)
- Unique 'Run-Pause-Run' pulse mode - user can set time from 30 to 99 secs
- Includes spiked rubber mat & an optional accessory of sticky pad mat
- Easy to clean and protects the equipment against penetration of liquids (IP 21 protection)
- Non slip rubber feet for stable operation

Weight (Capacity)	3 kg
Variable Speed	15-80 RPM
Motor Type	BLDC
Movement	Tumbling 7°
Run Time	1-999 mins & infinite
Programmable Mode	Yes. User can set and save upto 9 user defined programs (protocols)
Pulse Mode	Unique Run-Pause-Run pulse mode - User can set time from 30 to 99secs
Digital Display	7 Segment LED
Attachments	Spiked Rubber Mat (included) Sticky Pad Mat (optional)
Plate size	307mm x 267 mm
Protection class	IP 21



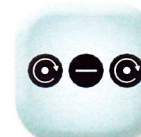
**Microprocessor  
Controlled**



**Brushless  
DC Motor**



**Digital  
Display**



**Momentary pause in  
Pulse mode**



SERVICE BY  
**haslab**  
alles ausser gewöhnlich

Digital 3D Shaker with Microprocessor & Brushless Motor Art.Nr. BEN0011

- Brushless DC motor for quiet and maintenance free long operation.
- Three dimensional rocking / tumbling motion for homogenous mixing
- Microprocessor controlled device with digital display
- Variable speed setting from 15 to 120 RPM in steps of 5 RPM
- Long timer range from 1-999 mins & infinite mode
- Programmable feature in which user can set and save upto 9 user defined programs (protocols)
- Unique 'Run-Pause-Run' pulse mode - user can set time from 30 to 99 secs
- Includes spiked rubber mat & an optional accessory of sticky pad mat
- Easy to clean and protects the equipment against penetration of liquids (IP 21 protection)
- Non slip rubber feet for stable operation

Weight (Capacity)	5 kg
Variable Speed	15-120 RPM
Motor Type	BLDC
Movement	Tumbling 7°
Run Time	1-999 mins & infinite
Programmable Mode	Yes. User can set and save upto 9 user defined programs (protocols)
Pulse Mode	Unique Run-Pause-Run pulse mode - User can set time from 30 to 99secs
Digital Display	7 Segment LED
Attachments	Spiked Rubber Mat (included) Sticky Pad Mat (optional)
Plate size	350 mm x 350 mm
Protection class	IP 21



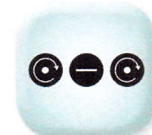
Microprocessor  
Controlled



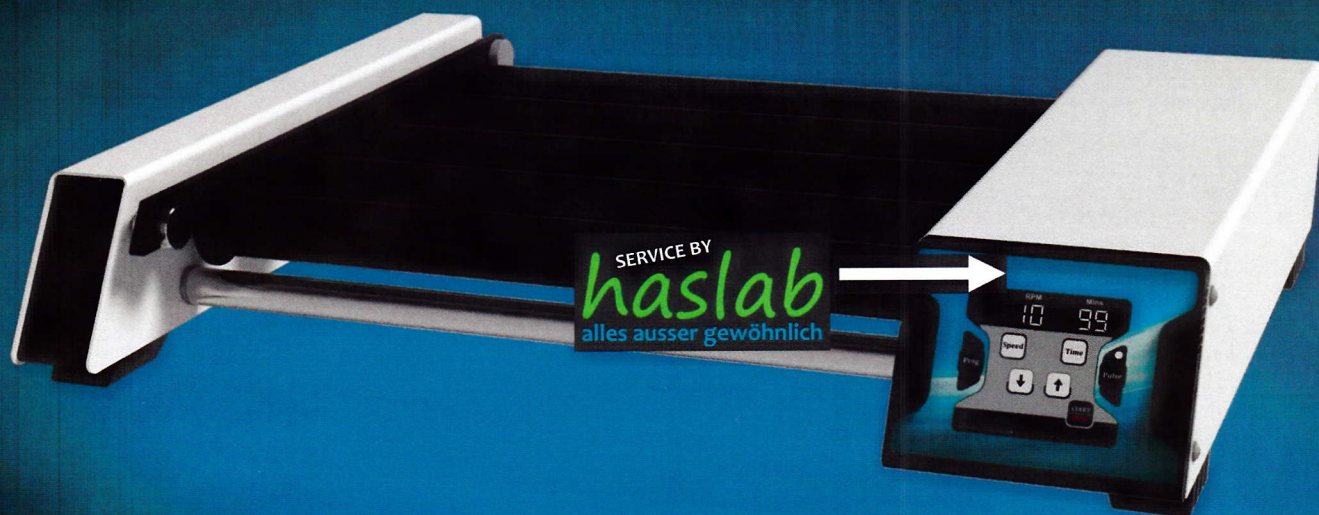
Brushless  
DC Motor



Digital  
Display



Momentary pause in  
Pulse mode



Art.Nr. BEN0015

**Digital Bottle Roller for Cultivation of anchorage - dependent cells**

- Brushless DC motor for quiet operation and maintenance free long operation.
- Microprocessor controlled unit with Digital Display.
- Adjustable speed ranging from 3-45 RPM with increment and accuracy of +/-1 RPM.
- Timer setting from 1 to 99 minutes & infinite mode.
- Programmable feature in which user can set and save upto 9 user defined programs (protocols).
- Programmable pulse mode feature with Run-Pause-Run motion with variable time setting from 30 to 99 seconds
- Maximum loading capacity of 6kgs
- Tool free removal / installation of rollers for replacement and cleaning.
- Option for auto Power on in case of power failure where equipment starts automatically and runs for the remaining left time.
- Stackable design with robust construction for stable operation

Motor Type	Brushless DC motor
Motion	Rolling
Speed Range	3-45 RPM
Timer Range	1 to 99 mins
Operation Type	Continuous & Timed Operation
Programable Range	User can set and save upto 9 user defined programs (protocols)
Removable Roller	Yes, Tool free removal & fitment
Pulse Mode	Yes, (Run - pause - Run Mode)
Vessel Size	38 to 60 mm diameter & upto 290 mm long
Protection Class	IP 21
Weight	6 Kg
Dimensions (W x D x H)	500 x 370 x 93 mm



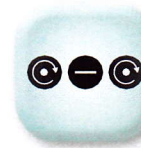
**Brushless DC Motor**



**Microprocessor Controlled with Digital Display**



**Detachable Rollers**



**Pulse mode for thorough mixing**

Hot Plate Magnetic Stirrer  
Art.Nr. BEN0033

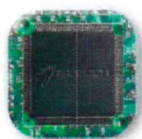
SERVICE BY  
**haslab**  
alles ausser gewöhnlich



- Powerful motor delivers constant speed under varying load conditions.
- Max. stirring capacity of 10 liters
- Single instrument with 3 different setup plates - Stainless steel, Ceramic coated SS & Aluminum
- Heater temperature setting from Ambient to 320°C
- Safe temperature circuit for accurate temperature during operation
- Variable speed setting from 200 to 2200 RPM in steps of 10 RPM & long timer range from 1-999 mins & infinite mode
- Microprocessor controlled hot plate stirrer with variable speed and time setting and also with last run memory function
- Large & clear display shows critical parameters. All set values are readily visible
- Comes with PT-1000 temperature probe to accurately measure temperature of medium
- Small footprint save valuable bench space
- Compact & robust construction

Stirring Quantity Max.	10 Liters
Set-up plate material*	Stainless steel, Ceramic coated SS & Aluminum
Variable Speed	200-2200 RPM in steps of 10/- RPM
Heat Temperature Range	Ambient to 320° C
Run Time	1-999 mins & infinite
Safe temperature circuit	Safe temperature circuit for accurate temperature during operation
Set-up plate dimensions	140 x 140 mm
Weight of Instrument	1.4 kg
Dimension (W x D x H)	248 x 156 x 104 mm
Protection class	IP 21

\*To be specified before placing order



Microprocessor controlled



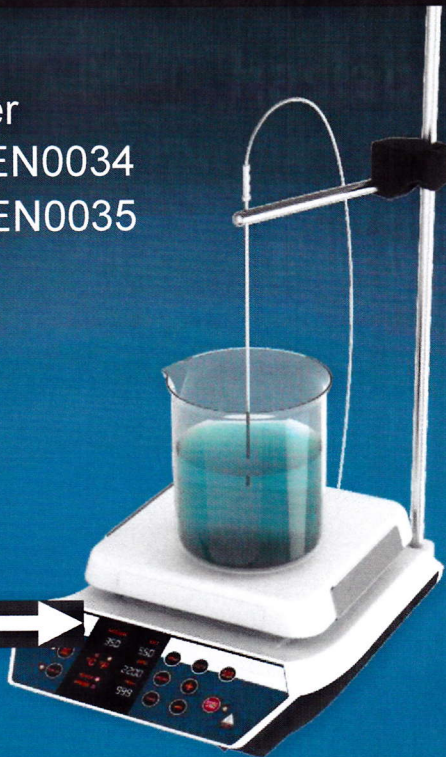
Digital Display



Small Footprint

Hot Plate Magnetic Stirrer  
 350°C Version Art.Nr. BEN0034  
 550°C Version Art.Nr. BEN0035

SERVICE BY  
**haslab**  
 alles ausser gewöhnlich



- Powerful BLDC motor delivers constant speed under varying load conditions.
- Robust nano crystalline glass ceramic top for resistant to liquid splash & temperature shocks
- Programmable feature for vigorous mixing of liquids - User can set and save upto 99 user defined programs (protocols)
- Programmable Pulse where user can set time from 30 to 99 secs
- Constant speed even with change of load or viscosity
- Safe temperature setting for safety
- Optional remote control pendant
- Optional Accessories :- PT 1000 Temperature probe  
 Support stand with boss head  
 Remote pendant control

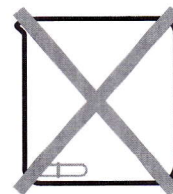
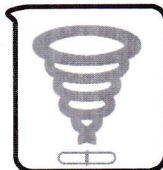
Capacity	20 Liter	
Heat Temperature Range	Ambient to 550° C	Ambient to 350° C
Motor Type	BLDC	
Set-up plate material	Nano crystalline glass ceramic	
Variable Speed	200-2200 RPM in steps of 10+/- RPM	
Run Time	1-999 mins & infinite	
Programmable Mode	Yes. User can set and save upto 99 user defined programs (protocols)	
Pulse Mode	Programmable Pulse mode - User can set time from 30 to 99 secs	
Set-up plate dimensions (mm)	180 x 180 mm	
Weight	5.4 kg	
Dimension (mm)	220 x 330 x 115	
Protection class	IP 21	



**Microprocessor controlled**



**Brushless DC Motor**



**Slip Detection mode**



**Auto Restart :** Hot Plate Stirrer resumes operation after a power failure or error condition



**Lock Mode :** This feature locks down the complete keypad functions after the user has set the parameters



**No toggle display :** Critical parameters are displayed without any toggle to ease the monitoring of operation



**Unique design :** Electronic circuit is uniquely positioned to ensure there is no damage to it even in the case of liquid spillage

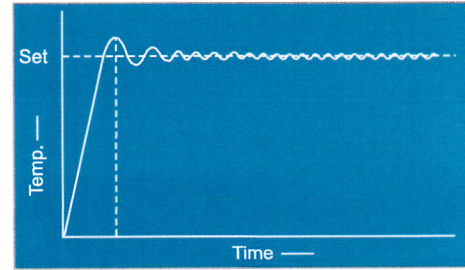
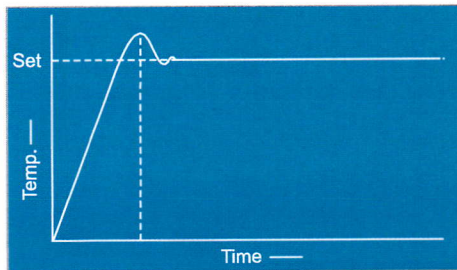
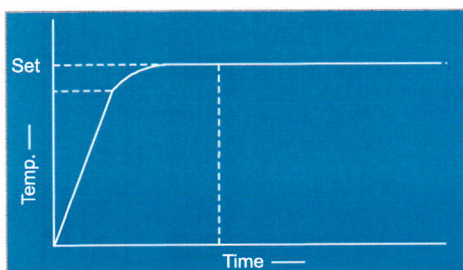


**Pulse Mode :** Reverse the stirring motion at programmable time for thorough mixing



### 3 heating modes for rapid, gradual & accurate heating

1) H01 : Slow heating with High Accuracy 2) H02 : Fast heating with High Accuracy 3) H03 : Rapid Heating with Overshoot



5/10/15 Station Heated Magnetic Stirrer with Microprocessor & Brushless Motor



5 Platz Version Art.Nr. BEN0030  
10 Platz Version Art.Nr. BEN0031  
15 Platz Version Art.Nr. BEN0032

**Multi Station Magnetic Stirrer for multiple samples simultaneous Stirring & Heating**

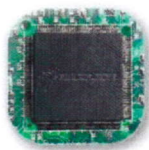
- Powerful BLDC motor delivers constant speed
- Microprocessor controlled device with digital display
- High performance multi position stirrer with 5/10/15 stirring positions with optimum use of laboratory space
- Variable speed ranging from 300-1500 RPM in steps of 10 RPM
- Timer setting from 1-999 mins and infinite
- Heater temperature setting from ambient to 120°C.
- Homogeneous temperature distribution across heating plate
- Programmable Pulse mode - reverses direction for better mixing
- Closed design allows easy cleaning and protects the equipments from accidental spills
- Water proof heater with inbuilt safety cutoff
- Non slip strength rubber feet

Motor Type	BLDC		
Number of Stirring Positions	5	10	15
Stirring Quantity Max	400 ml per position		
Variable Speed	300-1500 RPM in steps fo 10 RPM		
Heater Temperature Range	Ambient to 120° C		
Run Time	1-999 mins & infinite		
Pulse Mode	Programmable pulse mode - user can set time from 30 to 99 secs		
Set-up Plate Material	Stainless steel plate with silicone sheet		
Set-up Plate Dimensions	456 x 118 mm	460 x 178 mm	460 x 264 mm
Weight	3 kg	5 kg	7 kg
Protection Class	IP 42		

\* Also available as only Stirrer (without Heater)



Brushless DC Motor



Microprocessor Controlled



Programable Pulse Mode



Digital Display



Art.Nr. BEN0055

SERVICE BY  
**haslab**  
alles ausser gewöhnlich



**Compact Micro Plate Shaker with Microprocessor & Brushless Motor**

**The Personal Microplate Shaker is an essential instrument for mixing in individual micro plates of different types**

- Easy & spill free loading/removing of plate with turn down toggle clamp-tool free clamp change
- Orbital Diameter of 2 mm (1 mm radius)
- Tiny footprint - as small as the plate itself
- Adjustable speed 300 to 1800 RPM
- Even mixing across to all wells
- Universal fit - comes with two sets of inter changeable clamps for different microplates
- Timer setting of 1 to 99 mins & infinite
- Inbuilt Counter balance for stable operation
- Can be used inside cold rooms/incubator (upto 40°C)
- Option remote operation (connect via USB) - save & run programs record data logs

Speed Setting	300 to 1800 RPM
Orbital Diameter	2 mm
Motor type	BLDC
Timer setting	1 to 99 mins
Digital Display	Yes
Inbuilt Counterbalance	Yes
Dimension (W X D X H)	127 x 86 x 85 mm
Weight	1.36 kg
Attachments (included in standard pack)	Replaceable clamps to use different types of standard micro plates
Included Attachment	Attachment for 20 x 1.5 / 2.0 ml micro tubes



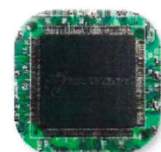
**Tiny Footprint**



**Counter Balance for Stable Operation**



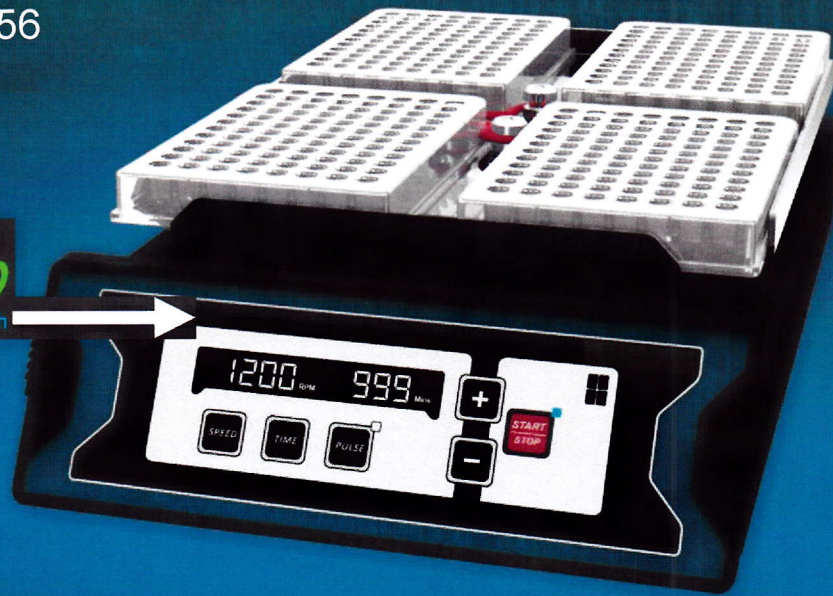
**Turn down clamp for easy loading/unloading**



**Microprocessor Controlled**

4 Plate Shaker  
Art.Nr. BEN0056

SERVICE BY  
**haslab**  
alles ausser gewöhnlich



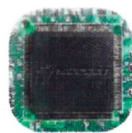
**The Microplate Shaker is an essential instrument for mixing in individual micro plates of different types**

- 3mm orbital motion for thorough mixing in microplates
- Brushless DC motor for quiet operation and maintenance free long life
- Microprocessor controlled digital display
- Adjustable speed ranging from 200 to 1200 RPM
- Long timer setting 1 to 999 minutes & infinite mode
- Rubber o-ring provides firm grip for plate holding
- Easy access to all 4 plates for loading and unloading
- Programmable Pulse mode for vigorous shaking in clockwise & anticlockwise direction
- Last run memory feature
- Compatible to all standard skirted microplates
- Easy to clean and maintain

Motor Type	BLDC motor
Orbital Motion	3 mm
Number of plates	Upto 4
Variable Speed	200 RPM to 1200 RPM
Run Time	1 to 999 mins & inf
Pulse mode	Yes, Programmable ( 30 to 90 secs)
Weight	5.4 kg
Maximum Volume	4 x 384 x 60 µl
Inbuilt Counterbalance	Yes
Dimensions (W x D x H)	343 x 195 x 88 mm
Digital Display	Yes
Input Voltage	24 V
Attachments	Acc. All standard Skirted Microplates



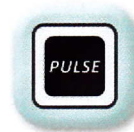
BLDC Motor



Microprocessor controlled



Digital Display



Pulse mode for thorough mixing



Mikroplate Thawing

Art.Nr. BEN0057

**Microplate Thawing is an essential unit which avoids long wait for frozen or refrigerated microplates to achieve room temperature.**

The low voltage Microplate Thawing is aimed at improving lab productivity. The well distributed constant stream of air below the plate ensures that the microplate is safely defrost & brought to ambient temperature in less time.

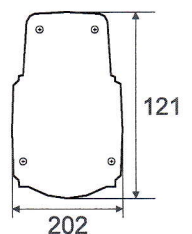
Avoids long waits for frozen or refrigerated plates to achieve room temperature.

- Uniform stream of air
- Tiny footprint
- Six times faster than atmosphere cooling
- Low voltage instrument
- Easy to carry with extremely light weight
- Simple and straight forward operation
- Accepts all standard skirted microplates

Variable Speed	Yes
Power Supply	12 VDC
Number Of Plate	One
Dimensions (W X D X H)	121 x 202 x 38 mm
Weight	140 grams



**Uniform Stream of Air**



**Tiny footprint**

Motorless Slim Magnetic Stirrer  
Art.Nr. BEN0040

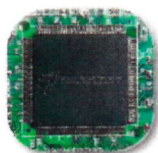


SERVICE BY  
**haslab**  
alles ausser gewöhnlich

The motorless magnetic stirrer is a maintenance free, flat & compact stirring device for various laboratory applications

- No moving parts - Truly maintenance free
- Slim profile & Compact design with digital display
- Adjustable speed from 15 to 1500 RPM at every 50 RPM
- Microprocessor controlled with last run memory feature
- Pulse mode - Reverses the direction at every 30 secs for thorough mixing
- Timer range 1- 99 mins & infinite mode
- Stirring Capacity of upto 800 ml
- Corrosion resistant SS top surface for better chemical resistance
- IP 65 compliant design (Water spill resistant)
- Flat surface - Easy to wipe and clean
- Supplied with high strength PTFE Magnetic bar (25 x 8 mm)

Speed Setting	15 to 1500 RPM (at every 50 RPM)
Display	Digital - shows real-time speed
Max. Capacity	800 ml
Recommended Stir bar length	25 mm
Pulse Function	Yes
Timer	1 to 99 mins & infinite mode
Last run memory	Yes
Dimension (W X D X H)	156 x 110 x 13.2 mm
Weight	400 gm
Protection Class	IP 65 compliant design (Water spill resistant)
Standard Accessory	1 high strength stir bar



Microprocessor  
Controlled



Pulse Mode  
& Timer  
Function



Stainless Steel Top  
for  
Corrosion Resistance



Digital  
Display

Multistation Motorless  
Ultra Thin Magnetic Stirrer

Art.Nr. BEN0041

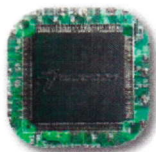


SERVICE BY  
**haslab**  
alles ausser gewöhnlich

The motorless 4 position magnetic stirrer is maintenance free and ultra flat stirring device for various laboratory applications

- No moving parts - Truly maintenance free
- Low aspect ratio (just 13.4 mm thick)
- Microprocessor controlled with last run memory feature
- Software driven gradual acceleration
- Adjustable speed from 15 to 1200 RPM @ every 50 RPM
- Pulse mode - Reverses the direction at every 30 secs for thorough mixing
- Timer range 1- 99 mins and infinite mode
- Universal power supply - small wall mount adaptor
- IP 65 Compliant design (Water spill resistant)
- Corrosion resistant SS top surface for better chemical resistance
- Includes 4 high strength magnetic stirrers bars (8 x 25 mm)

Max RPM	1200 RPM
Speed Setting	15 to 1200 RPM (at every 50 RPM)
Digital Display	Yes
Load Capacity	4 x 400 ml
Recommended Stir bar length	25 mm
Pulse Function	Yes
Timer	1 to 99 mins and continuous
Last run memory	Yes
Dimension (W X D X H)	457 x 126 x 13.4 mm
Weight	1.9 kg
Protection Class	IP 65 compliant design (Water spill resistant)



Microprocessor  
Controlled



Pulse Mode  
& Timer  
Function

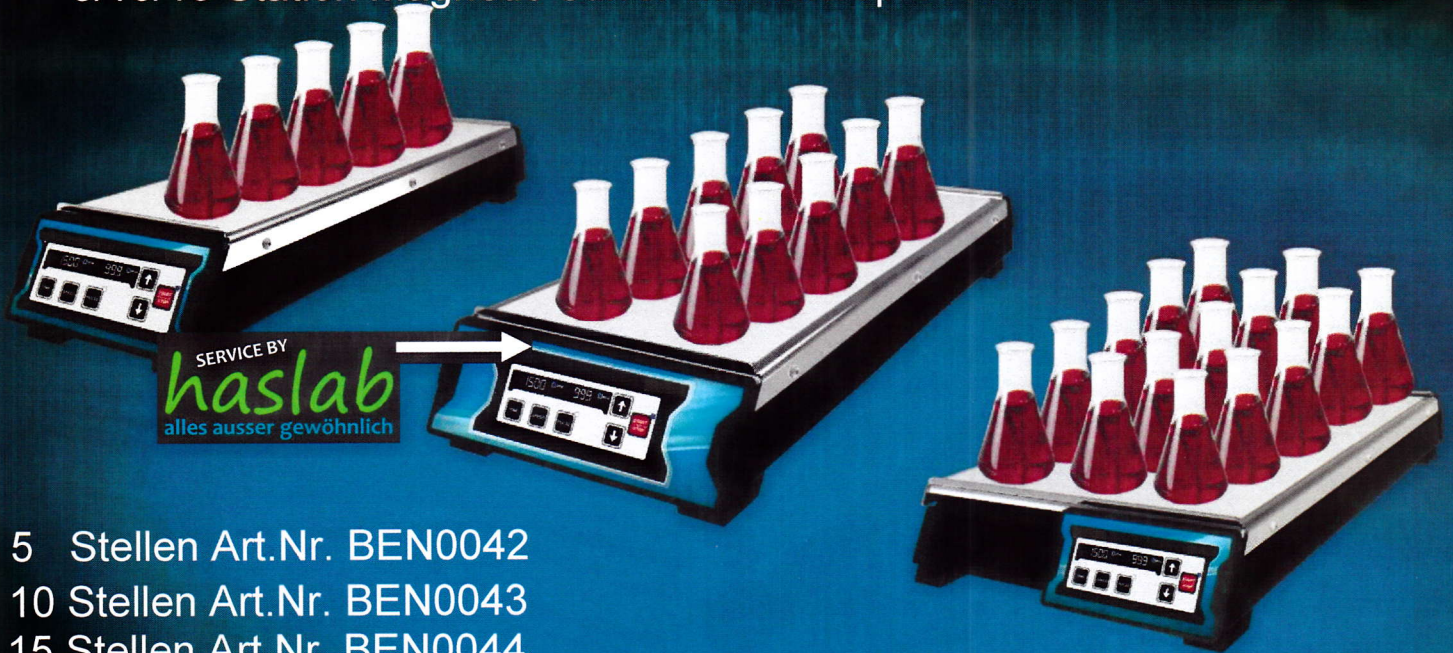


Slim Profile with  
Stainless Steel Top



Digital  
Display

5/10/15 Station Magnetic Stirrer with Microprocessor & Brushless Motor



5 Stellen Art.Nr. BEN0042  
10 Stellen Art.Nr. BEN0043  
15 Stellen Art.Nr. BEN0044

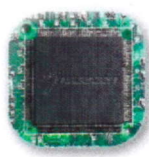
**Multi Station Magnetic Stirrer for multiple samples Stirring**

- Powerful BLDC motor delivers constant speed
- Microprocessor controlled device with digital display
- High performance multi position stirrer with 5/10/15 stirring positions with optimum use of laboratory space
- Variable speed ranging from 300-1500 RPM in steps of 10 RPM
- Timer setting from 1-999 mins and infinite
- Programmable Pulse mode - reverses direction for better mixing
- Closed design allows easy cleaning and protects the equipments from accidental spills
- Non slip strength rubber feet

Motor Type	BLDC		
Number of Stirring Positions	5	10	15
Stirring Quantity Max	400 ml per position		
Variable Speed	300-1500 RPM in steps fo 10 RPM		
Run Time	1-999 mins & infinite		
Pulse Mode	Programmable pulse mode - user can set time from 30 to 99 secs		
Set-up Plate Material	Stainless steel plate with silicone sheet		
Set-up Plate Dimensions	456 x 118 mm	460 x 178 mm	460 x 264 mm
Weight	3 kg	5 kg	7 kg
Protection Class	IP 42		



**Brushless DC Motor**



**Microprocessor Controlled**



**Programable Pulse Mode**



**Digital Display**

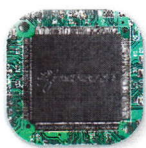
Magnetic Stirrer with Microprocessor

Art.Nr. BEN0045



- DC motor for quiet operation and maintenance free long operation
- Microprocessor controlled stirrer with variable speed and time setting and also with last run memory function
- High performance magnetic stirrer with last run memory feature
- Variable speed ranging from 200-2200 RPM in steps of 10 RPM
- Timer setting from 1-999 mins and infinite mode
- Programmable pulse mode feature with 'Run-Pause-Run' motion
- Closed design allows easy cleaning and protects the equipments from accidental spills
- Non slip strength rubber feet
- Small footprint saves valuable bench space - Suitable for use in hoods and cold rooms

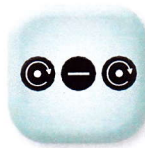
Capacity	10 Litres
Variable Speed	200 -2200 RPM
Run Time	1-999 mins & infinite
Pulse Mode	Yes (Run-Pause-Run Mode)
Digital Display	Yes
Set-up plate dimensions	140 x 140 mm
Weight	1.4 kg
Dimension (W x D x H)	248 x 156 x 104 mm
Protection class	IP 21



Microprocessor  
Controlled



Digital Display

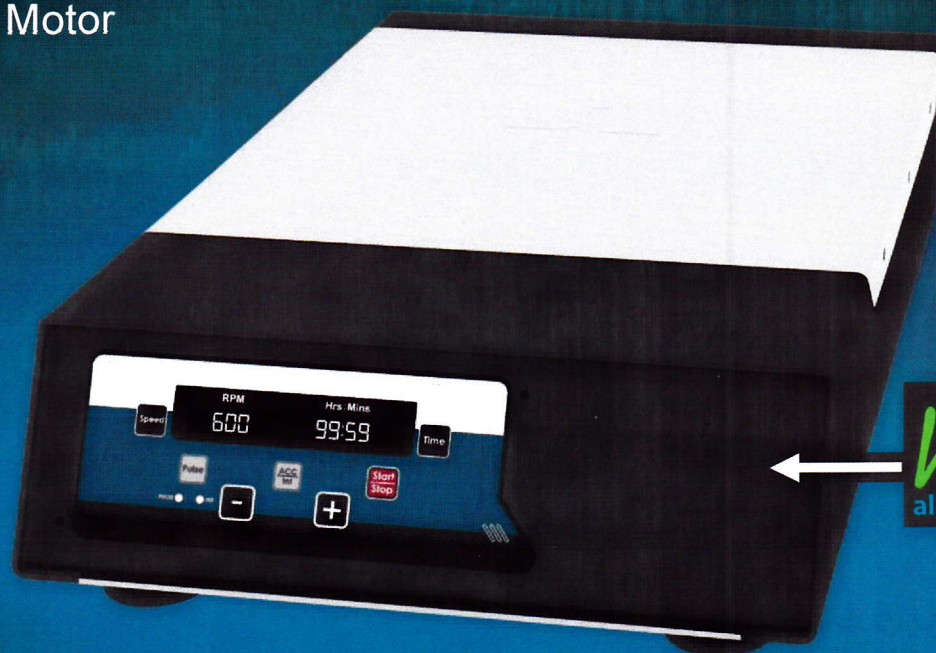


Momentary  
Pulse mode for  
thorough mixing



Small Footprint

High Capacity Magnetic Stirrer with Microprocessor & Brushless Motor



SERVICE BY  
**haslab**  
alles ausser gewöhnlich

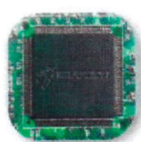
50 Liter Art.Nr. BEN0047 / 200 Liter Art.Nr. BEN0048

- Brushless DC motor for quiet operation and maintenance free long operation.
- Microprocessor controlled unit with digital display.
- Adjustable speed ranging from 100-1000 RPM (50L) & 100-600 RPM (200L) with increment of 1 RPM and accuracy of +/- 10 RPM.
- Long timer setting from 1 to 99 hours and 59 minutes & infinite mode.
- Choice of acceleration rates from A1 to A9.
- Programmable Pulse with direction change feature - Pulse timing can be set from 30 secs to 300 secs.
- Stainless steel (SS) set up plate for corrosion protection.
- Power Mode feature in case of power failure the equipment starts operating automatically for remaining left time on resumption.
- Power Overload safety feature.
- Optional feature of adjusting the height of the product.
- Available with support frame for holding vessel.

Motor Type	Brushless	
Max. Capacity	50 Liters	200 Liter
Variable Speed	100 - 1000 RPM	100 - 600 RPM
Run Time	1-99:59 mins & infinite	
Ramp Up Speed feature	User can select different Acceleration rates (A1-A9 with A9 being the fastest rate and A1 slowest)	
Pulse Mode	Yes. Alternating clockwise and anticlockwise motion with 3 sec stop for better and thorough mixing.	
Digital Display	Yes	
Accuracy	+/- 10 RPM	
Plate Dimensions (SS)	184 x 184 mm	250 x 250 mm
Input Voltage	240 V	
Max. Stir bar length	80 mm	120 mm
Protection class	IP 21	
Structure frame size (With adjustable height)	394 x 392 x 101 mm	505 x 500 x 105 mm



Brushless DC Motor



Microprocessor Controlled



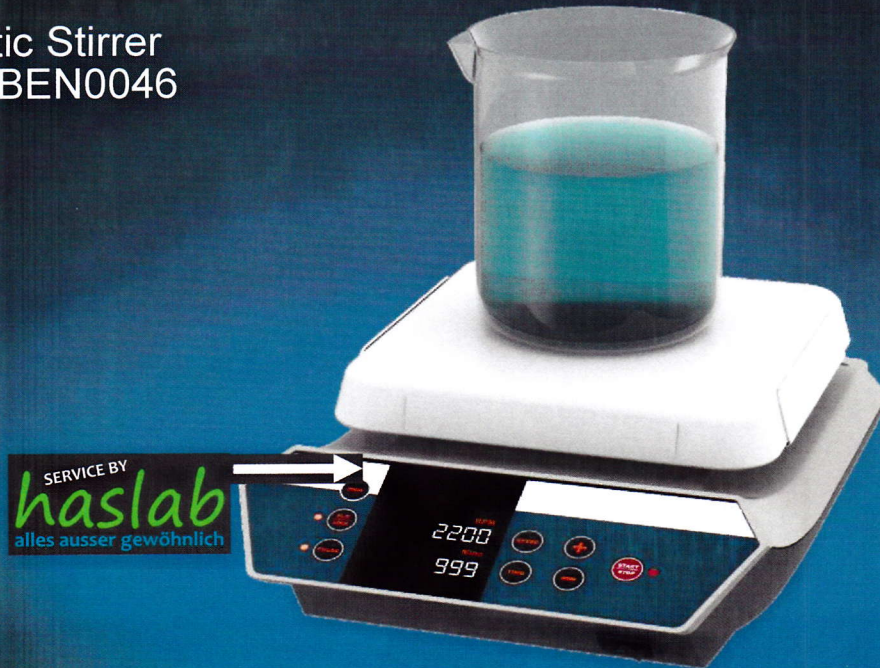
Digital Display for Speed and Time



Pulse Mode



Magnetic Stirrer  
Art.Nr. BEN0046



- High performance stirrer - optimum use of laboratory space
- Variable speed and time setting with digital display.
- Brushless DC motor for long life and maintenance-free operation.
- Noiseless and consistent stirring.
- Closed design allows easy cleaning and protects the equipment against penetration of liquids.
- Programmable pulse mode for vigorous stirring.
- Nonslip strength rubber feet.
- Stirring bar Slip detection feature.
- Keypad lock feature for safety.
- Inbuilt memory storage for various programs.
- Remote operation with the data logger.
- Smart programmable heating modes.
- Auto-Start Mode.
- This hotplate stirrer is specially designed in a way that both stirring and heating functions can be used individually.

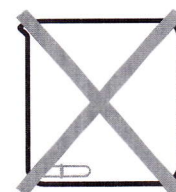
Capacity	20 Liter
Motor Type	BLDC
Set-up plate material	Nano Crystalline Glass Ceramic
Variable Speed	200-2200 RPM in steps of 10 ± RPM
Run Time	1-999 mins & infinite
Programmable Mode	Yes. User can set and save upto 99 user defined programs (protocols)
Pulse Mode	Programmable Pulse mode - User can set time from 30 to 99 secs
Set-up plate dimensions (mm)	180 x 80 mm
Weight	4.5 kg
Dimensions (W x D x H)	330 x 220 x 115 mm
Protection class	IP 21



**Microprocessor controlled**



**Brushless DC Motor**



**Slip Detection mode**



**Auto Restart :** Hot Plate Stirrer resumes operation after a power failure or error condition



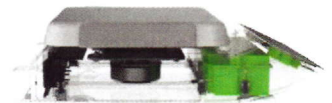
**Lock Mode :** This feature locks down the complete keypad functions after the user has set the parameters



**No toggle display :** Critical parameters are displayed without any toggle to ease the monitoring of operation



**Unique design :** Electronic circuit is uniquely positioned to ensure there is no damage to it even in the case of liquid spillage



**Pulse Mode :** Reverse the stirring motion at programmable time for thorough mixing



The Smart Personal Centrifuge with Microprocessor & Brushless Motor

Art.Nr. BEN0060



The best in class personal centrifuge with Brushless DC motor & microprocessor control for high efficiency & long life

- Brushless DC motor for maintenance free long life
- Microprocessor controlled - Enables digital variable speed and time setting with last run memory function
- Closed loop control ensures realtime feedback - Delivers accuracy of  $\pm 25$  RPM of set speed even at variable load conditions
- Unique Imbalance Detection safety with auto cut off
- 8 place closed rotor ensures better airflow, quiet operation and low heat generation ensures stability for temperature sensitive sample
- Electronic Brake for immediate stop - Suitable for quick spins
- Next gen design with Digital Display
- Robust construction for longer operation life
- Small footprint saves valuable bench space - Suitable for use in hoods and cold rooms

Rotor Capacity	8 place Closed Rotor for 1.5/2.0 ml Microtubes
Maximum RPM / RCF (g)	6000 / 2000g
Motor type	Brushless DC
Display	Digital Display
Imbalance Detection	Yes
Accuracy/Calibration	Adjusts to varying load condition (self calibrates) to give accuracy as $\pm 25$ rpm
Noise Level	< 55 db
Variable Speed	(500-6000 RPM in steps of 100 RPM)
Timer	1-25 Minutes & infinite mode
Dimensions (WxDxH) in mm	162 x 157 x 115
Rotors and Adaptors (included in standard pack)	8 Slot x 1.5/2.0 ml Closed Rotor
	PCR Strip Rotor (2 x 8 x 0.2 ml)
	Reduction adaptors for 0.2/0.5 ml Microtubes

\* Fixed speed version (BL08) for specific speed can be made available.



**BLDC Motor**



**Imbalance Detection with automatic cut off**



**Digital Display for Speed and Time**



**Electronic Safety Brake for user safety**

The Table Top Genius with Microprocessor & Brushless Motor

Art.Nr. BEN0061



- Large back-lit LCD display for easy reading of multiple parameters
- Intuitive simple interface for quick and convenient setting
- Better airflow design ensures lesser heat generation for greater sample safety and less noise
- Brushless DC motor – Maintenance free, delivers better power/weight ratio and fit for extended runs
- Imbalance Detection with auto cut off
- Lid lock safety - Lid opens automatically on run completion
- Dual shell metal design for greater safety
- One touch Short Spin operation & RPM / RCF conversion
- Microprocessor controlled with last run memory feature
- USB port for remote operation & data logger feature
- User programmable (user can set upto 99 programs of 4 lines, each as per run requirements)
- Small footprint saves valuable bench space
- Suitable for use in hoods or cold rooms

Rotor Capacity	12 Place 12 x 1.5ml / 2.0 ml microtubes
Maximum RPM / RCF	15000 / 15596g
Display	Large back-lit LCD display
Imbalance Detection	Yes
Noise Level	< 60 db
Rotor	Rotor with Screw on Lid (for better contamination protection)
Motor Type	(BLDC) Brushless DC motor
Programmable	Yes, USB connectivity for Data log & remote operation programming
Timer Setting	Countdown timer from 1-999 Mins (min-sec mode)
Dimensions (W x D x H)	262 X 230 X 131 mm
Rotors and Adaptors (included in standard pack)	12 place x 1.5/2.0 ml Reduction adaptors for 0.2 ml microtubes Reduction adaptors for 0.4/0.5 ml microtubes
Optional Rotors	PCR Strip Rotor (2x8x0.2 ml with Metal safety lid)



**Large Back lit LCD Display**



**Dual Shell Metal Design**



**Good Airflow Design (low temperature rise)**



**User Programmable (99 programs of 4 lines)**

10mm / 20mm Diameter, Orbital / Linear motion



SERVICE BY  
haslab  
alles ausser gewöhnlich

Attachments	Platform Shaker attachments
UA-01	Universal platform with adjustable bars (Flask capacity 9 x 250ml, 6 x 500 ml)
DA-01	Disk attachment Base plate with slip resistance tray
PC-250	Base plate with 9 plastic clamps : 9 x 250 ml
PC-500	Base plate with 9 plastic clamps : 9 x 500 ml
FA-01	Funnel Attachment
SS-250	Base plate with 9 Stainless steel clamps : 9 x 250 ml
SS-500	Base plate with 9 Stainless steel clamps : 9 x 500 ml
SC-100	Stainless steel Clamp for 100 ml flask
SC-150	Stainless steel Clamp for 150 ml flask
SC-250	Stainless steel Clamp for 250 ml flask
SC-500	Stainless steel Clamp for 500 ml flask
SC-1000	Stainless steel Clamp for 1000 ml flask
VA-01	VDRL attachment

10mm/Orbital Art.Nr. BEN0070 - 20mm/Orbital Art.Nr. BEN0071  
10mm/Linear Art.Nr. BEN0073 - 20mm/Linear Art.Nr. BEN0074

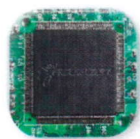
- Platform shaker with true Orbital and Linear reciprocating motion, for shaking mass upto 7.5 Kgs.
- Brushless DC motor for long life and maintenance free operation
- Dedicated LED display for Speed, Time & Program parameters
- Time ranging from 1 min to 99 hours & 59 minutes
- Program mode allows to set motion direction, speed, time, dwell time, sequence and loop operation
- User can save upto 6 programs with each program having 9 sub - programs
- Different attachments platform makes it possible to use almost all shapes and sizes of vessels
- Option for auto power On (in case of power failure) - runs for remaining time after resumption
- RS-232 interface for remote operation optional
- Protection rating of IP21

Shaking movement	Orbital / Linear	Orbital / Linear
Orbital diameter	10 mm	20 mm
Max Weight	Upto 7.5 kg	
Speed	50 RPM To 500 RPM	50 RPM To 300 RPM
Motor Type	Brushless DC motor	
Time Setting Range	0 min to 99.59 hrs	
Dimensions (W x D x H)	408 x 350 x 99 mm	
IP	IP 21	
Programmable feature	6 Programs with each program having 9 sub - Programs	
Program Looping	Yes	
RS 232 interface	(Optional)	
Platform Size (LxW)	330 mm x 330 mm	

\*While ordering please specify the motion type & displacement ( linear/ orbital -10/20 mm) & the attachment you wish to order with the shaker



Brushless  
DC Motor



Microprocessor  
controlled



User Programmable



Loop Function

Art.Nr. BEN0090 (30mm Orbital)  
 Art.Nr. BEN0091 (40mm Orbital)  
 Art.Nr. BEN0092 (50mm Orbital)  
 Art.Nr. BEN0093 (60mm Orbital)

Art.Nr. BEN0095 (30mm Linear)  
 Art.Nr. BEN0096 (40mm Linear)  
 Art.Nr. BEN0097 (50mm Linear)  
 Art.Nr. BEN0098 (60mm Linear)



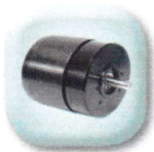
Attachments	Platform Shaker Attachments
UA-01	Universal platform with adjustable bars (Flasks capacity: 36 x 250ml, 25 x 500 ml, 13 x 1000 ml)
PC-250	Base plate with 24 plastic clamps : 24 x 250 ml
PC-500	Base plate with 24 plastic clamps : 24 x 500 ml
SS-250	Base plate with 24 Stainless steel clamps : 24 x 250 ml
SS-500	Base plate with 24 Stainless steel clamps : 24 x 500 ml
SC-100	Base plate with 24 Stainless steel clamps : 24 x 100 ml
SC-1000	Base plate with 24 Stainless steel clamps : 8 x 1000 ml

30 mm - 70 mm Diameter, Orbital / Linear motion

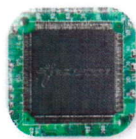
- Platform shaker with true Orbital and Linear reciprocating motion for shaking mass upto 15 Kg
- Brushless DC motor for long life and maintenance free operation
- Dedicated LED display for Speed, Time & Program parameters
- Time ranging from 1 min to 99 hours & 59 minutes
- Program mode allows to set Motion Direction, Speed, Time, Dwell Time, Sequence and Loop operation
- User can save upto 6 programs with each program having 9 sub - programs
- Different attachments platform makes it possible to use almost all shapes and sizes of vessels
- RS-232 interface for remote operation optional
- Protection rating of Ip21

Shaking movement	Orbital / Linear
Orbital diameter*	30, 40, 50, 60, 70 mm
Max Weight	Upto 15 kg
Speed	50 To 300 RPM
Motor Type	Brushless DC motor
Time Setting Range	1 min to 99.59 hrs
Platform Size (LxW)	745 mm x 490 mm
IP	IP 21
Programmable feature	6 Programs with each program having 9 sub - Programs
Program Looping	Yes
RS 232 interface	(Optional)
Dimensions (L x W x H)	825 mm x 625 mm x 165 mm

\*While ordering please specify the motion type & displacement ( linear or orbital / 30 -70 mm ) & the attachment you wish to order with the Shaker



Brushless DC Motor



Microprocessor controlled



User Programmable



Loop Function

Digital Tube Roller with Microprocessor & Brushless Motor



Art.Nr. BEN0080

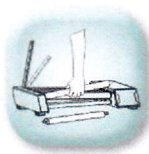
**Next gen Digital Tube Roller with Microprocessor Control for optimum mixing of blood & viscous samples**

- Brushless DC motor for maintenance free long life and quiet operation
- Speed setting from 10 to 80 RPM & timer from 1 min to 99 min & infinite mode
- Adjustable rollers spacing to hold different diameter tubes
- Removable rollers for easy cleaning in case of sample spillage
- Programming feature - User can save and run upto 9 user defined programs (Protocols)
- Microprocessor controller for accurate speed under variable load
- Unique user programmable feature - Saves up to 9 programs
- Digital display with soft touch keypad
- Programmable pulse mode feature with 'Run-Pause-Run' motion
- User can set pulse time from 30 to 99 seconds
- Stackable design with robust construction

Number of tubes	Upto 15 x 7 ml Blood Tubes
Speed Range	10 to 80 RPM at every 1 RPM
Motor Type	Brushless DC motor
Motion	Rocking & Rolling
Timer Range	1 to 99 mins & infinite mode
Operation Type	Continuous & Timed Operation
Removable Rollers	Yes, Tool free removal & fitment
Pulse Mode	Yes (Run-Pause-Run Mode)
Tilt Angle	+/-3°
Protection Class	IP 21
Load capacity	2 kg
Dimensions (W x D x H)	501 x 301 x 93 mm
Power Consumption	6 W
Weight	6 kg



**Brushless DC Motor**



**Detachable Roller**



**Momentary Pulse mode for thorough mixing**



**Microprocessor controlled programmable Roller**

Digital Tube Roller with Microprocessor & Brushless Motor



Art.Nr. BEN0081

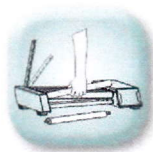
**Next gen Digital Tube Roller with Microprocessor Control for optimum mixing of blood & viscous samples**

- Brushless DC motor for maintenance free long life and quiet operation
- Speed setting from 10 to 80 RPM & timer from 1 min to 99 min & infinite mode
- Adjustable rollers spacing to hold different diameter tubes
- Removable rollers for easy cleaning in case of sample spillage
- Programming feature - User can save and run upto 9 user defined programs (Protocols)
- Microprocessor controller for accurate speed under variable load
- Unique user programmable feature - Saves up to 9 programs
- Digital display with soft touch keypad
- Programmable pulse mode feature with 'Run-Pause-Run' motion
- User can set pulse time from 30 to 99 seconds
- Stackable design with robust construction

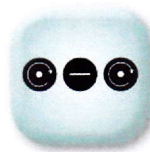
Number of tubes	Upto 27 x 7 ml Blood Tubes
Speed Range	10 to 80 RPM at every 1 RPM
Motor Type	Brushless DC motor
Motion	Rocking & Rolling
Timer Range	1 to 99 mins & infinite mode
Operation Type	Continuous & Timed Operation
Removable Rollers	Yes, Tool free removal & fitment
Pulse Mode	Yes (Run-Pause-Run Mode)
Tilt Angle	+/-3°
Protection Class	IP 21
Load capacity	2 kg
Dimensions (W x D x H)	502 x 448 x 92.5 mm
Power Consumption	6 W
Weight	7.5 kg



**Brushless DC Motor**



**Detachable Roller**



**Momentary Pulse mode for thorough mixing**

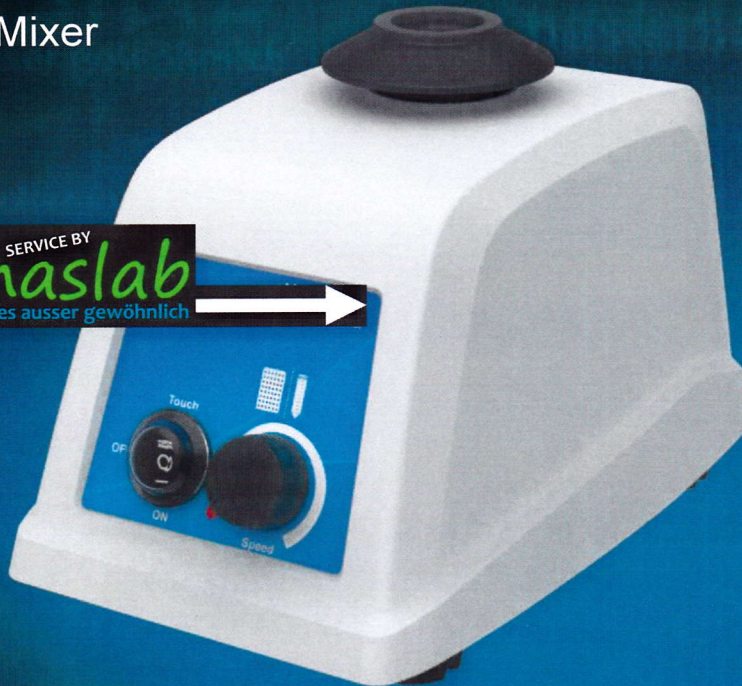


**Microprocessor controlled programmable Roller**

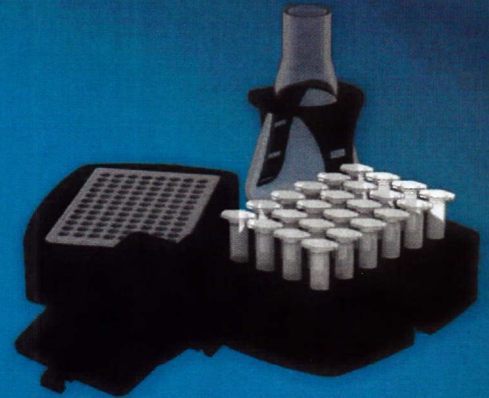


Vortex Mixer

SERVICE BY  
**haslab**  
alles ausser gewöhnlich



Art.Nr. BEN0017



**The essential vortex mixer for everyday mixing operations in the lab.**

- Variable speed selection - delivers upto 2800 RPM
- 3 way switch (Touch, Continuous & Stand-by mode)
- Inbuilt counter balance for stable operation (No walking issues)
- Brushless AC motor fitted with ball bearing
- Gentle press for smooth & silent operation
- Orbital diameter of 4 mm
- Optional attachments for low speed shaking with Microplate, Microtubes & Flask
- Visual indication marker for max speed with attachment
- IP 21 class protection - suitable for use in hoods

Max Speed	2800 RPM
Orbital diameter	4 mm
Motor type	Brushless AC
Max Load Capacity	500 gm
Speed accuracy	± 5%
Different modes	Touch, Stand-by & Continuous mode
Dimensions	205 x 136 x 138.5 mm
Power Supply	220 - 240VAC, 50Hz
Ambient temperature	5 to 40 °C
Weight	3 kg
Optional Attachments (not included)	Universal platform for attaching either microplate or microtube or flask Attachments



**Gentle Press for Smooth Operation**



**Counter Balance for Stable Operation**



**Optional Attachments (for Tubes, Plate & Flask)**



**Silent Operation**



Art.Nr. BEN0018



**Digital Vortex Mixer with Microprocessor & Brushless Motor**

**This powerful digital vortex mixer is an essential benchtop unit for everyday mixing operations in the lab.**

- Brushless DC motor for maintenance free long life
- Adjustable speed from 300 to 4200 RPM & timer setting
- Digital display - Shows speed and time alternatively at every 5 secs
- Unique programmable pulse mode function - User enabled run time and off time setting
- Inbuilt counter balance (No walking issues)
- Microprocessor based closed loop control for greater efficiency
- 3 way switch (On/Off/Touch) with Power On LED
- Orbital diameter of 4 mm
- Can be used in hoods & cold rooms
- Optional attachments for low speed shaking with Microplate, Microtubes & Flask
- Sticker indicator of permissible speed for various attachments

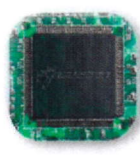
Orbital diameter	4 mm
Motor Type	Brushless DC
Digital Display	Yes
Dimensions (W X D X H)	205 x 136 x 138.5 mm
Speed Setting	300-4200 RPM
Timer Setting	0-999 mins (min/sec display)
Pulse mode	Yes, Programmable Pulse
Max Load Capacity	500 gm
Weight	2.8 kg
Optional Attachments (not included)	Universal platform for attaching either - microplate / microtube / flask Attachments



**Maintenance free BLDC Motor**



**Counter balance for smooth operation**



**Microprocessor controlled**



**Optional Attachments**

Digital Multi Vortexer  
with Microprocessor &  
Brushless Motor

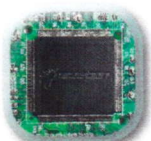


Art.Nr. BEN0019

**Heavy duty Vortex Mixer with large capacity for high throughput laboratory**

- Brushless DC motor for quiet operation and maintenance free long operation.
- Microprocessor controlled unit with digital display.
- Adjustable speed ranging from 300-2500 RPM with increment of 1 RPM and accuracy of +/-5 RPM with option of electing Clockwise (CW) and Counterclockwise (CCW) motion
- Long timer setting from 1 to 999 mins & infinite mode.
- Programmable Pulse with selection of variable time 30-99 seconds.
- Power Overload feature in which if the equipment consumes more power than its capacity, it automatically shuts down.
- Four optional attachments : Supplied with any chosen foam base

Attachments (optional)	a) 7 ml tube foam to accommodate 60 tubes b) 15 ml tube foam to accommodate 45 tubes c) 50 ml tube foam to accommodate 18 tubes d) 250 ml flask foam to accommodate 6 flasks
Digital Display	Yes
Variable Speed	300-2500 RPM
Motor Type	BLDC
Run Time	1-999 mins & infinite
Motion Type	Clockwise (CW) and Counterclockwise (CCW) motion
Pulse Mode	Programmable Pulse with selection of variable time 30-99 seconds.
Weight	18 kg
Input Voltage	24 V
Power Consumption	75 W
Protection class	IP 21



Microprocessor controlled



Brushless DC Motor

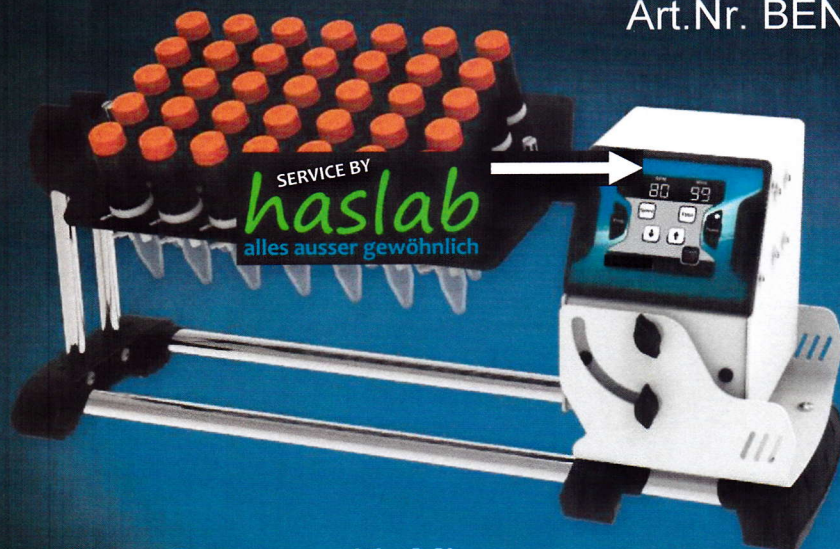


Digital Display

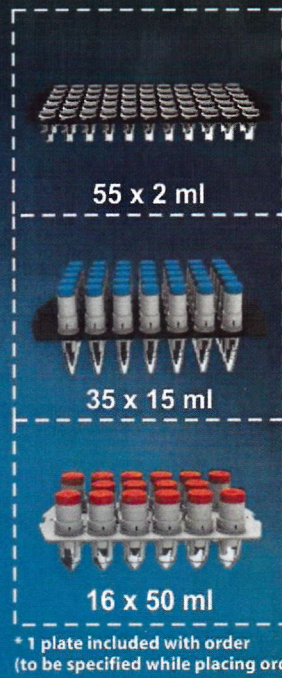


Pulse mode

Art.Nr. BEN0020



**Digital Plate Rotator with Microprocessor  
& Brushless Motor**

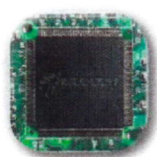


\* 1 plate included with order  
(to be specified while placing order)

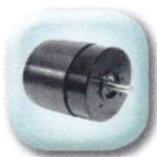
- Brushless DC motor for quiet and maintenance free long life operation
- Microprocessor controlled Plate Rotator with variable speed and time setting and also with last run memory function
- 3 Plate options : Supplied with any one chosen disc plate
- Adjustable speed ranging from 10-80 RPM with increment & accuracy of +/- 1 RPM
- Timer setting from 1 to 99 minutes & infinite mode.
- Angle can be adjusted from 0 to 90 degrees
- Programmable - user can set and save upto 9 User-Defined Programs (Protocols)
- Pulse mode function for alternating clockwise and anticlockwise motion with 2 sec stops for better and thorough mixing
- Option for Auto power On in case of power failure - on resumption it will start automatically and run for the remaining time
- Easy removal / installation of Plates for replacement & cleaning

Plate Capacity (supplied with any one chosen plate)*	16 tubes x 50 ml 35 tubes x 15 ml 55 tubes x 2 ml
Programmable Mode	Yes. User can set and save upto 9 User-Defined programs
Variable Speed	10-80 RPM
Run Time	1-99 mins & infinite
Motor Type	BLDC motor
Pulse Mode	Yes. Alternating clockwise and anticlockwise motion with 2 sec stops for better and thorough mixing.
Angle of Disc Plate	Adjustable from 0-90 degrees
Weight (Capacity)	2 kg
Digital Display	Yes
Input Voltage	24V
Dimension (W x D x H)	540 x 274 x 186 mm
Protection class	IP 21

\* 1 plate included with order (to be specified while placing order)



**Microprocessor controlled**



**Brushless DC Motor**



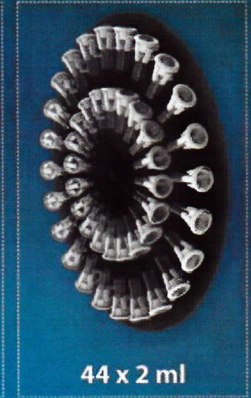
**Digital Display**



**Pulse mode**

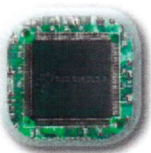
Digital Disk Tube Rotator with  
Microprocessor & Brushless Motor Art.Nr. BEN0021

SERVICE BY  
**haslab**  
alles ausser gewöhnlich



- Brushless DC motor for quiet and maintenance free long life operation.
- Microprocessor controlled disc rotator with variable speed and time setting and also with last run memory function
- Adjustable speed ranging from 10-80 RPM with increment & accuracy of +/- 1 RPM.
- Timer setting from 1 to 99 minutes & infinite mode.
- Angle can be adjusted from 0 to 90°
- Programmable - user can set and save upto 9 user defined programs (protocols).
- Pulse mode function for alternating clockwise and anticlockwise motion with 2 sec stops for better and thorough mixing.
- Option for Auto power On in case of power failure - on resumption it will start automatically and run for the remaining time.
- Easy removal / installation of Disc plates for replacement & cleaning.

Capacity (supplied with any one chosen disk plate)	12 tubes x 50 ml
	24 tubes x 15 ml
	44 tubes x 2 ml
Programmable Mode	Yes. User can set and save upto 9 user defined programs
Variable Speed	10-80 RPM
Run Time	1-99 mins & infinite
Motor Type	BLDC motor
Pulse Mode	Yes. Alternating clockwise and anticlockwise motion with 2 sec stops for better and thorough mixing.
Angle of Disc Plate	Adjustable from 0-90 degrees
Weight (Capacity)	2 kg
Digital Display	Yes
Input Voltage	24V
Dimension (W x D x H)	383 x 325 x 325 mm
Protection class	IP 21



Microprocessor controlled



Brushless DC Motor



Digital Display



Pulse mode

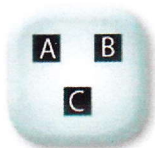
Blood Tube Rotator



Art.Nr. BEN0082

- AC synchronous motor for noiseless operation.
- Can accommodate upto 10 Blood collection tubes
- Circular motion gives gentle but effective mixing
- Fix speed of 30 RPM with an accuracy of  $\pm 2$  RPM
- Continuous / infinite mode of operation
- Robust construction with strong metal from design
- Maximum operational weight capacity of 1kg
- Compact saves bench space design
- Protection class of IP 21
- Easy to remove and install attachments for replacement and cleaning

Capacity (supplied with any one chosen attachments)	10 x 6 ml
	9 x 15 ml
	4 x 50 ml
Motor Type	AC Synchronous
Variable Speed	Fix Speed of 30 RPM
Run Time	Continuous / Infinite
Speed Accuracy	$\pm 2$ RPM
Removable Plate	Yes
Noise Level	Noiseless operation
Max Loading (Capacity)	1 kg
Dimension (W x D x H)	190 x 135 x 133 mm
Protection class	IP 21



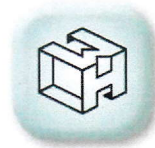
Attachments for  
different Tubes sizes



Silent operation



Accuracy of  
 $\pm 2$  RPM



Compact Design saves  
bench space